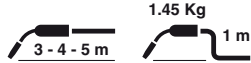


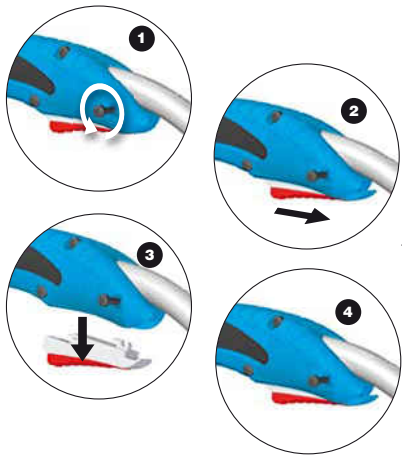
TPLUS 500



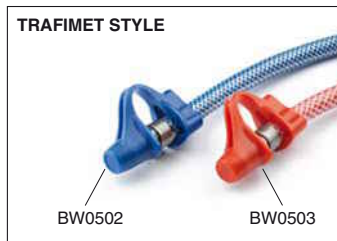
1.45 Kg

V peak	113	Ø mm	1.0 - 1.2 - 1.6 2.0 - 2.4	X 100%	500A CO ₂ 450A Mix
	2÷4 bar		1.6 l/min		

CODE	↔	
MB3723	3 m	EURO
MB3724	4 m	EURO
MB3725	5 m	EURO

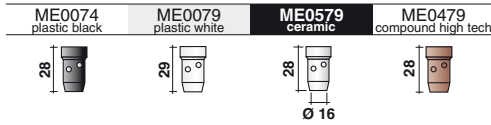
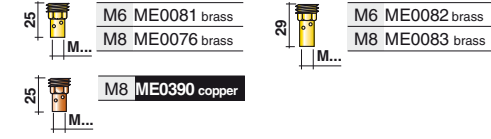
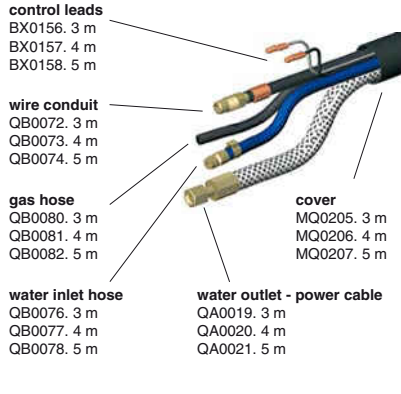


- IT** Sostituzione rapida del pulsante
- EN** Quick Trigger Replacement
- DE** Schnellwechselsystem für den Schalter
- FR** Remplacement rapide de la gâchette
- ES** Sustitucion rápida del pulsador
- TR** Kolay ve çabuk tetik değişimi.
- RU** Быстрая замена курка



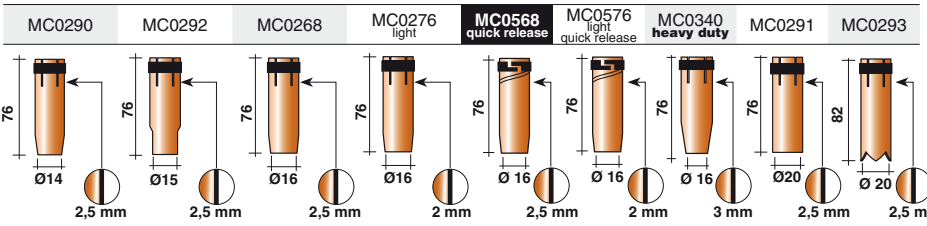
EN 60974-7



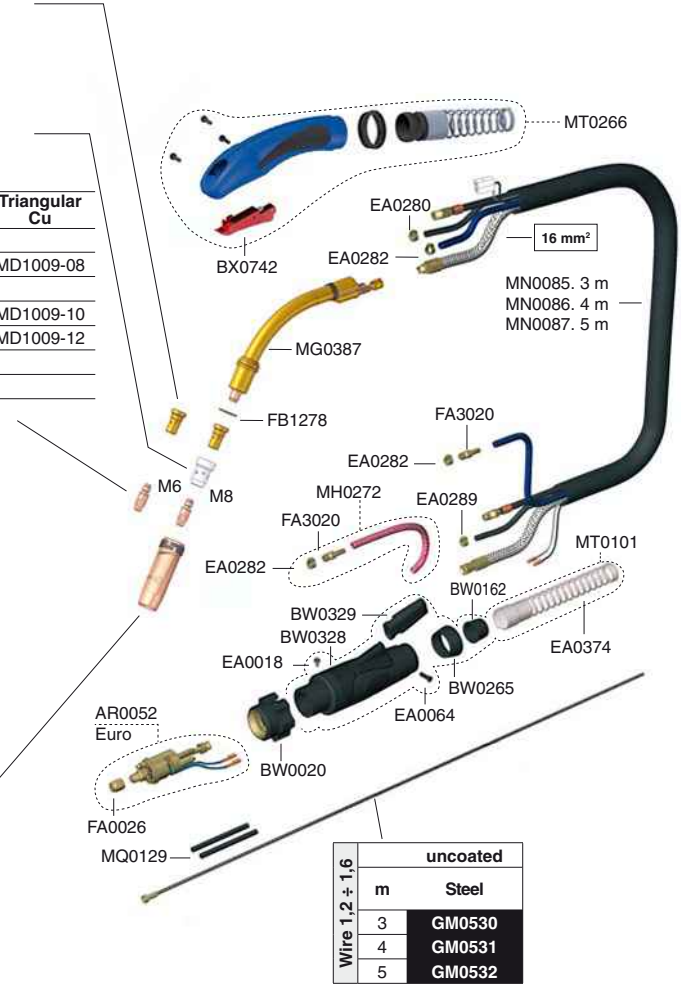


Ø	Cu	Cu-Ni	Cu for Al	CuCrZr	Triangular Cu
M6 28 Ø 8	0,6	MD0009-06	MD0009-36	MD0009-76	
	0,8	MD0009-08	MD0009-38	MD0009-78	MD1009-08
	0,9	MD0009-09			
M8 30 Ø 10	1,0	MD0009-10	MD0009-40	MD0009-60	MD0009-80
	1,2	MD0009-12	MD0009-42	MD0009-62	MD0009-82
	1,4	MD0009-14	MD0009-44		MD0009-84
	1,6	MD0009-16	MD0009-46	MD0009-66	MD0009-86
	2,0	MD0005-20		MD0005-70	
	2,4	MD0005-24		MD0005-74	

Ø	Triangular Cu	Triangular CuCrZr
1,0	MD1005-10	MD1005-80
1,2	MD1005-12	MD1005-82
1,6	MD1005-16	MD1005-86



STANDARD (REF.)



uncoated	
Wire 1,2 ÷ 1,6	m Steel
	3 GM0530
	4 GM0531
	5 GM0532